

A photograph of a modern, single-story house with a covered porch. The house features light-colored horizontal siding and a dark roof. The porch has white columns and a brick base. The sun is shining brightly in the clear blue sky, creating a lens flare effect. The overall scene is bright and sunny.

HOME READY

PACKAGES

If you've already found the perfect block of land, we have the perfect home ready package.

As well as our long list of Homestarter Plus, Elevate or Coast inclusions, our Home Ready home only packages include:

- ▶ Polytech letterbox and clothesline with concrete pad
- ▶ Exposed aggregate driveway
- ▶ Site works allowance specific to Willow Estate, Logan Reserve

*subject to sighting of land information

For more information, please contact:

Henry Lockett on 0432 584 260 or email henry@drhomes.com.au

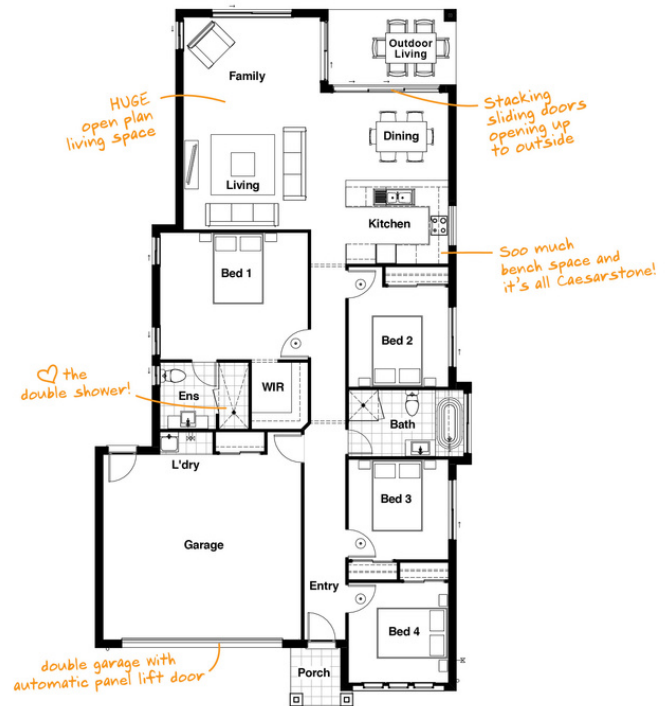


PALMER 20

4 bedrooms, 2 bathrooms, 1 kitchen, 2 living areas

From first home to family home, the Palmer 20 is designed to adapt. There's a well separated bedroom wing at the front of the home plus two living spaces opening onto the outdoor living area.

HOME READY PACKAGE **\$278,000**



HOME DIMENSIONS

House width [^]	11.2m	House length [^]	20.7m
Total Floor Area (including Outdoor Living)			186.0 m2
[^] measured external wall to external wall			

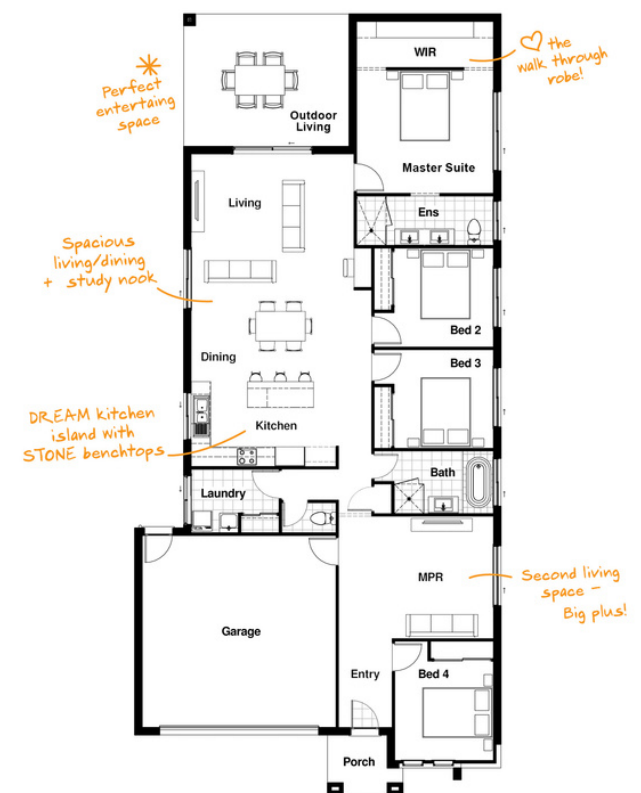


NEO 24

4 bedrooms, 2 bathrooms, 2 kitchens, 2 living areas

With several spacious living areas plus a chef's kitchen, four bedrooms, a double garage and a generous outdoor living, this home is the complete package. You'll be proud to call it home and enjoy many a night entertaining family and friends.

HOME READY PACKAGE **\$314,000**



HOME DIMENSIONS

House width [^]	11.1m	House length [^]	23.6m
Total Floor Area (including Outdoor Living)			225.0 m2
[^] measured external wall to external wall			



HUGHES 16

3 2 1 2

This home's clean modern lines flow from the front facade right through to the spacious indoor/outdoor living areas. With 3 double bedrooms, the Hughes 16 is packed with extras including a COLORBOND® steel roof, stainless steel appliances plus stone kitchen benchtops.

HOME READY PACKAGE \$258,000



HOME DIMENSIONS

House width [^]	10.7m	House length [^]	19.9m
Total Floor Area (including Outdoor Living)			150.6m ²
[^] measured external wall to external wall			

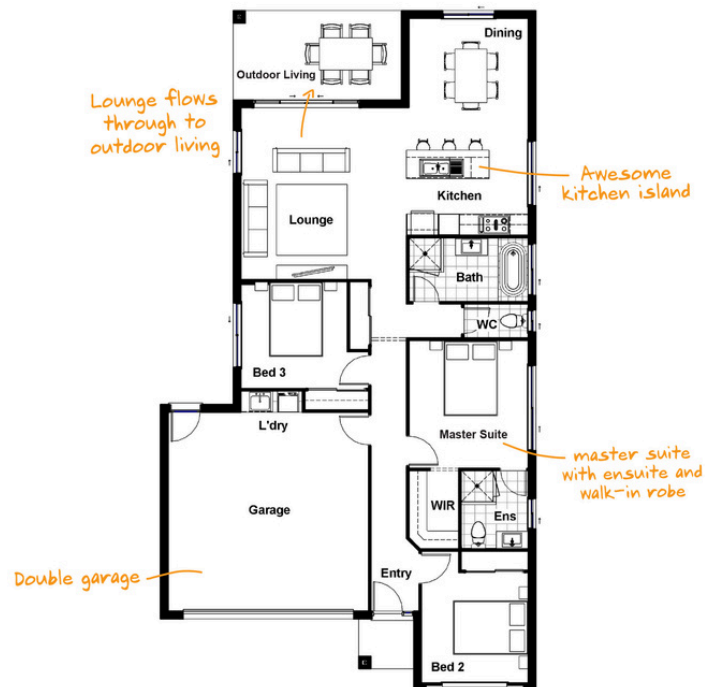


JORDAN 18

3 2 1 2

This spacious three bedroom home features a well-designed kitchen/living hub including a much-coveted kitchen island with sleek stone benchtop.

HOME READY PACKAGE \$278,000



HOME DIMENSIONS

House width [^]	10.5m	House length [^]	19.1m
Total Floor Area (including Outdoor Living)			167.5 m ²
[^] measured external wall to external wall			



ARMSTRONG 19

3 Beds 2 Baths 1 Car 2

A modern family home with stunning street appeal. Inside, clearly defined zones make the most of available light and space.

HOME READY PACKAGE \$311,745



HOME DIMENSIONS

House width [*]	10.7m	House length [*]	19.6m
Total Floor Area (including Outdoor Living)			177.3m ²
[*] measured external wall to external wall			



SHERWOOD 23

4 Beds 2 Baths 1 Car 2

Walk through the impressive front entry and you'll discover a well-thought-out family home with free-flowing indoor/outdoor living, all within view from the perfectly positioned kitchen island.

HOME READY PACKAGE \$339,350



HOME DIMENSIONS

House width [*]	11.1m	House length [*]	24.0m
Total Floor Area (including Outdoor Living)			212.6m ²
[*] measured external wall to external wall			

Coast
by DRHomes



PALMS 21

4 2 1 2

This home is a masterclass in how to stretch your space so your crew can stretch out in style. Clever features are tucked away in every direction, from the family-friendly IT nook, to the generous walk-in pantry and life-changing mud room.

HOME READY PACKAGE **\$323,500**



House width [^]	10.6m
House length [^]	21.0m
Total Floor Area (incl. Outdoor Living)	198.1m²

[^]measured external wall to external wall

Coast
by DRHomes



HORIZON 23

4 2 1 2

Like a fresh sea breeze, classic modern coastal design flows right through this home. From the front porch, to the mud room and walk through pantry, to the open spaces that drift out to the outside living, it's easy to picture a life that just goes with the flow.

HOME READY PACKAGE **\$326,000**



HOME DIMENSIONS

House width [^]	12.1m
House length [^]	21.0m
Total Floor Area (incl. Outdoor Living)	219.3m²

[^]measured external wall to external wall

For more information, please contact:

Henry Lockett on 0432 584 260 or email henry@drhomes.com.au

DRHomes Head Office

Unit 4, 3970 Pacific Highway
Loganholme QLD 4129
Call 07 3801 1328
Email sales@drhomes.com.au

DRHomes.com.au

DRHomes
the home team advantage™