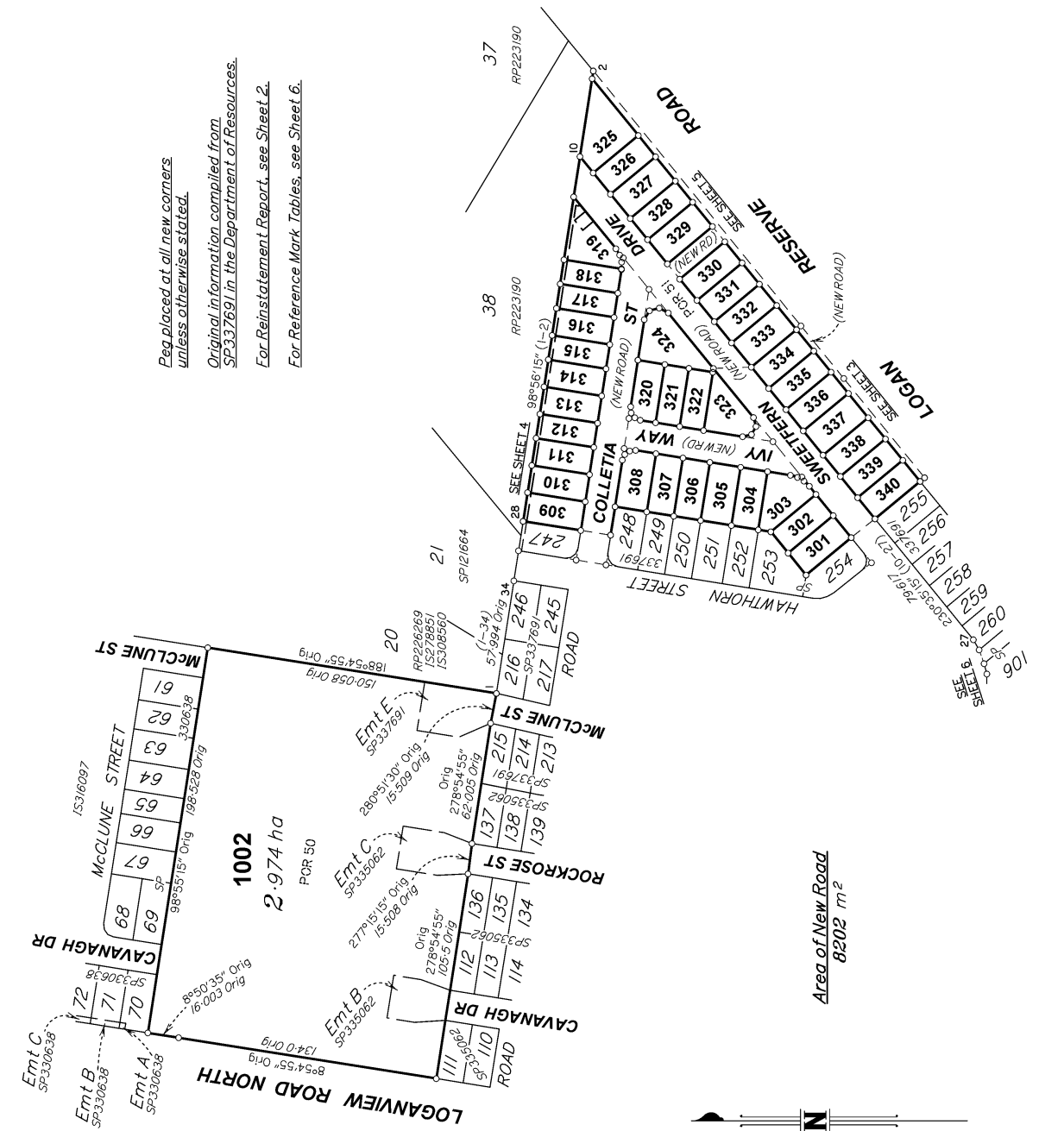


Land Title Act 1994 ; Land Act 1994  
Form 21 Version 4

SURVEY PLAN

Sheet 1 of 6

*Peg placed at all new corners unless otherwise stated.*  
*Original information compiled from SP337691 in the Department of Resources.*  
*For Reinstatement Report, see Sheet 2.*  
*For Reference Mark Tables, see Sheet 6.*

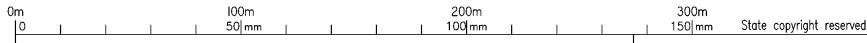


Area of New Road  
8202 m<sup>2</sup>

LandPartners Pty Ltd (ACN 118 146 008) hereby certify that the land comprised in this plan was surveyed by the corporation, by Mark William ELLIS, surveyor, for whose work the corporation accepts responsibility, under the supervision of Timothy John NEY, cadastral surveyor and that the plan is accurate, that the said survey was performed in accordance with the Survey and Mapping Infrastructure Act 2003 and Surveyors Act 2003 and associated Regulations and Standards and that the said survey was completed on 05/08/2024.

*[Signature]*  
Director  
*[Signature]*  
Director

16/08/2024  
Date



**Plan of Lots 301-340, 1002,  
Easements G-P in Lots 309-318  
and Easements Q & R in Lot 319**

Cancelling Lot 1001 on SP337691

LOCAL GOVERNMENT: LOGAN C.C. LOCALITY: LOGAN RESERVE

Meridian: MGA (Zone 56) Vide SP337691

Survey Records: No

Scale: 1:2000  
Format: STANDARD



BRS57540-00A-319-6 SP344072

**723620912**

EL 400 \$5,894.11  
23/10/2024 15:21:48

(Dealing No.)

**WARNING : Folded or Mutilated Plans will not be accepted.  
Plans may be rolled.  
Information may not be placed in the outer margins.**

4. Lodged by

(Include address, phone number, email, reference, and Lodger Code)

I. Existing		Created		
Title Reference	Description	New Lots	Road	Secondary Interests
51348010	Lot 1001 on SP337691	301-340 & 1002	New Rd	Emts G-R

**MORTGAGE ALLOCATIONS**

Mortgage	Lots Fully Encumbered	Lots Partially Encumbered
721931891	301-340 & 1002	-

**ENCUMBRANCE EASEMENT ALLOCATION**

Easement	Lots To Be Encumbered
722724368 (Emts B & C on SP335062)	1002
723212174 (Emt E on SP337691)	1002

**Reinstatement Report**

Plans Used: - SP335062, SP337691 & IS278731.

This survey is a stage of a larger subdivision as per the plans listed above. All measured original boundaries common with previous surveys listed above measure as per those plans. Original marks measured or gone are noted on the face of this Survey Plan.

1002	POR 50
301-340	POR 51
Lots	Orig

2. Orig Grant Allocation :

3. References :

Dept File :  
Local Govt :  
Surveyor : BRSS7540.00A

5. Passed & Endorsed :

By : LandPartners Pty Ltd  
Date : 16/08/2024  
Signed : *[Signature]*  
Designation : Plan Auditor

**6. Building Format Plans only.**

I certify that :  
\* As far as it is practical to determine, no part of the building shown on this plan encroaches onto adjoining lots or road.  
\* Part of the building shown on this plan encroaches onto adjoining \*lots and road

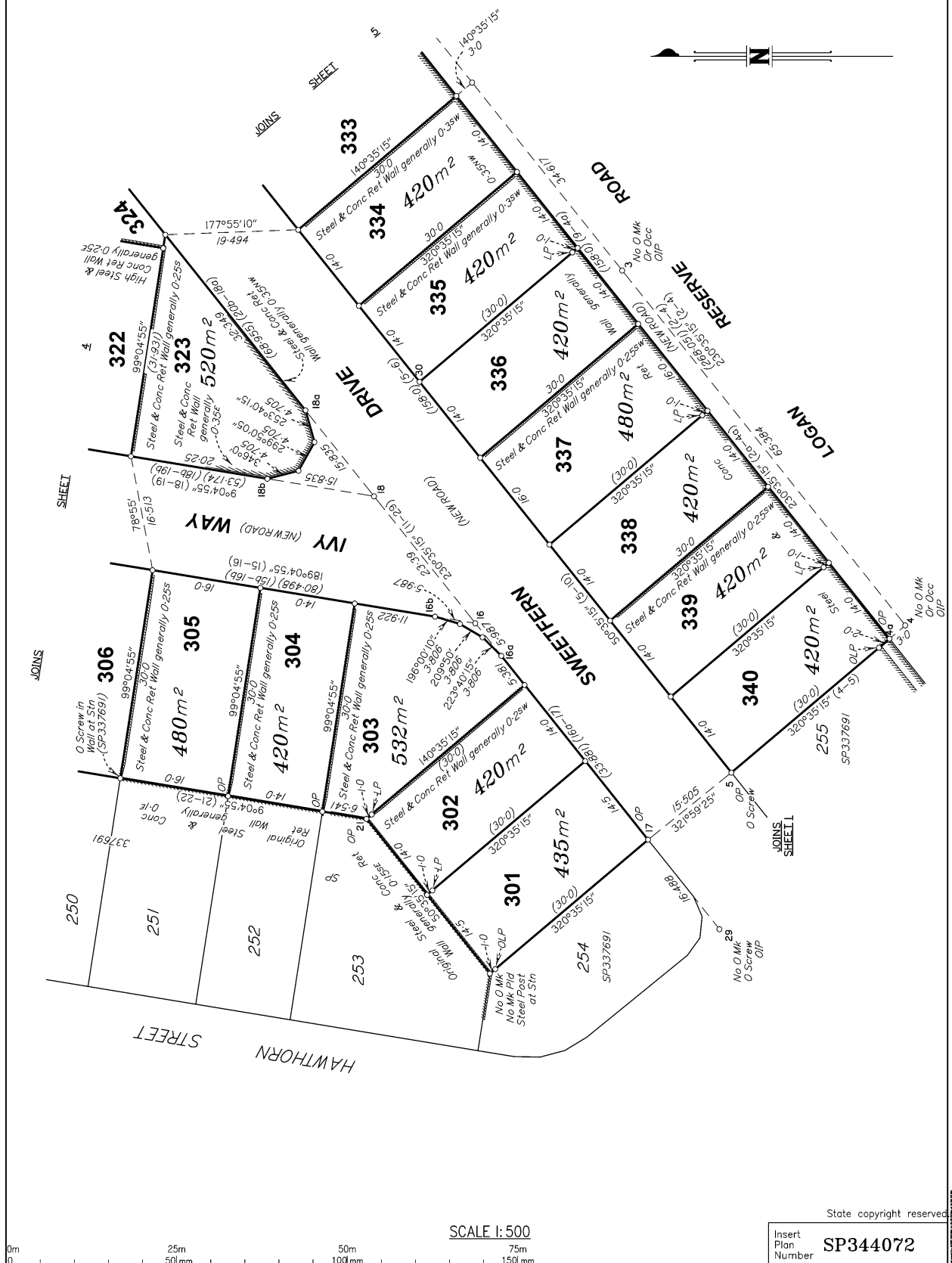
Cadastral Surveyor/Director\* Date  
*[Signature]* *[Date]*  
\*delete words not required

**7. Lodgement Fees :**

Survey Deposit \$ .....  
Lodgement \$ .....  
..... New Titles \$ .....  
Photocopy \$ .....  
Postage \$ .....  
TOTAL \$ .....

8. Insert Plan Number

**SP344072**

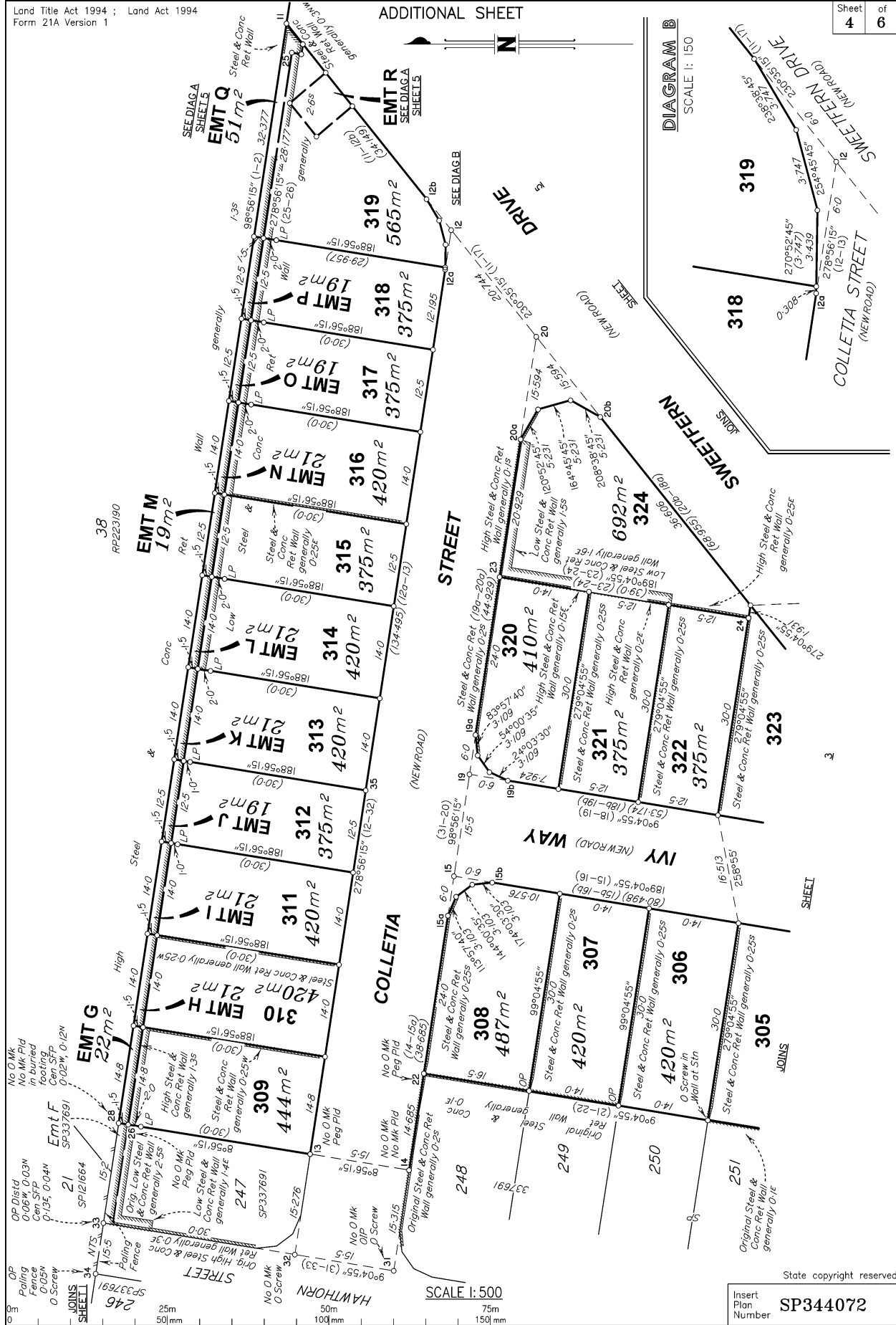


State copyright reserved

Insert Plan Number **SP344072**

BRS57540-00A-319-6 SP344072

ADDITIONAL SHEET



- OP 0.15d
- No Mk Pld
- 0.02W, 0.03W
- Fencing
- in buried
- footing
- Cent.SFP
- 0.135, 0.04N
- 0.05N
- Cent.SFP
- 0.02W, 0.12N
- SP337691
- 21
- SPI21664
- EMT F
- 22
- EMT G
- 246
- SP337691
- 247
- SP337691
- 248
- SP337691
- 249
- SP337691
- 250
- SP337691
- 251
- SP337691
- 252
- SP337691
- 253
- SP337691
- 254
- SP337691
- 255
- SP337691
- 256
- SP337691
- 257
- SP337691
- 258
- SP337691
- 259
- SP337691
- 260
- SP337691
- 261
- SP337691
- 262
- SP337691
- 263
- SP337691
- 264
- SP337691
- 265
- SP337691
- 266
- SP337691
- 267
- SP337691
- 268
- SP337691
- 269
- SP337691
- 270
- SP337691
- 271
- SP337691
- 272
- SP337691
- 273
- SP337691
- 274
- SP337691
- 275
- SP337691
- 276
- SP337691
- 277
- SP337691
- 278
- SP337691
- 279
- SP337691
- 280
- SP337691
- 281
- SP337691
- 282
- SP337691
- 283
- SP337691
- 284
- SP337691
- 285
- SP337691
- 286
- SP337691
- 287
- SP337691
- 288
- SP337691
- 289
- SP337691
- 290
- SP337691
- 291
- SP337691
- 292
- SP337691
- 293
- SP337691
- 294
- SP337691
- 295
- SP337691
- 296
- SP337691
- 297
- SP337691
- 298
- SP337691
- 299
- SP337691
- 300
- SP337691
- 301
- SP337691
- 302
- SP337691
- 303
- SP337691
- 304
- SP337691
- 305
- SP337691
- 306
- SP337691
- 307
- SP337691
- 308
- SP337691
- 309
- SP337691
- 310
- SP337691
- 311
- SP337691
- 312
- SP337691
- 313
- SP337691
- 314
- SP337691
- 315
- SP337691
- 316
- SP337691
- 317
- SP337691
- 318
- SP337691
- 319
- SP337691
- 320
- SP337691
- 321
- SP337691
- 322
- SP337691
- 323
- SP337691

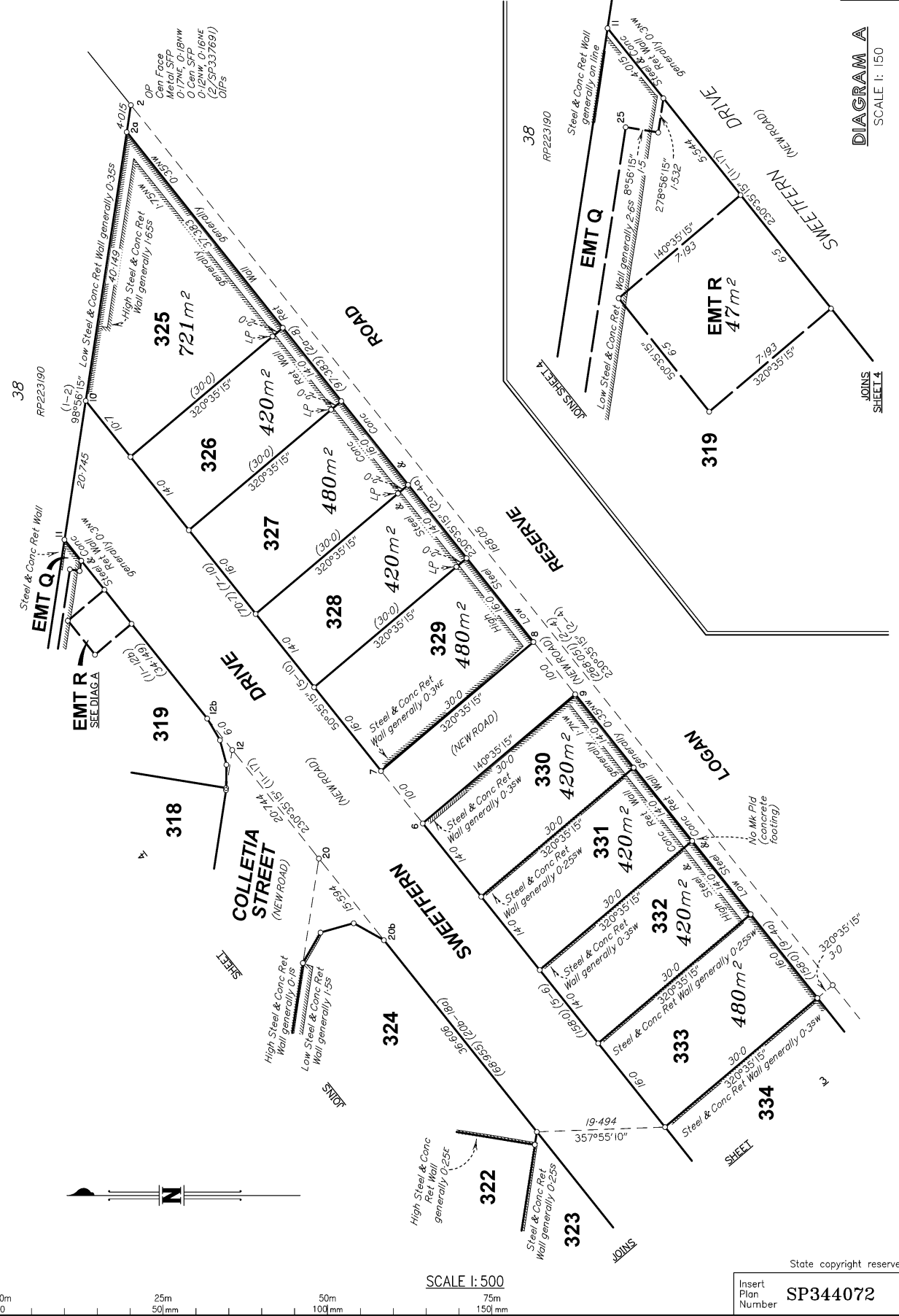
SCALE 1:500

State copyright reserved

Insert  
Plan  
Number  
**SP344072**

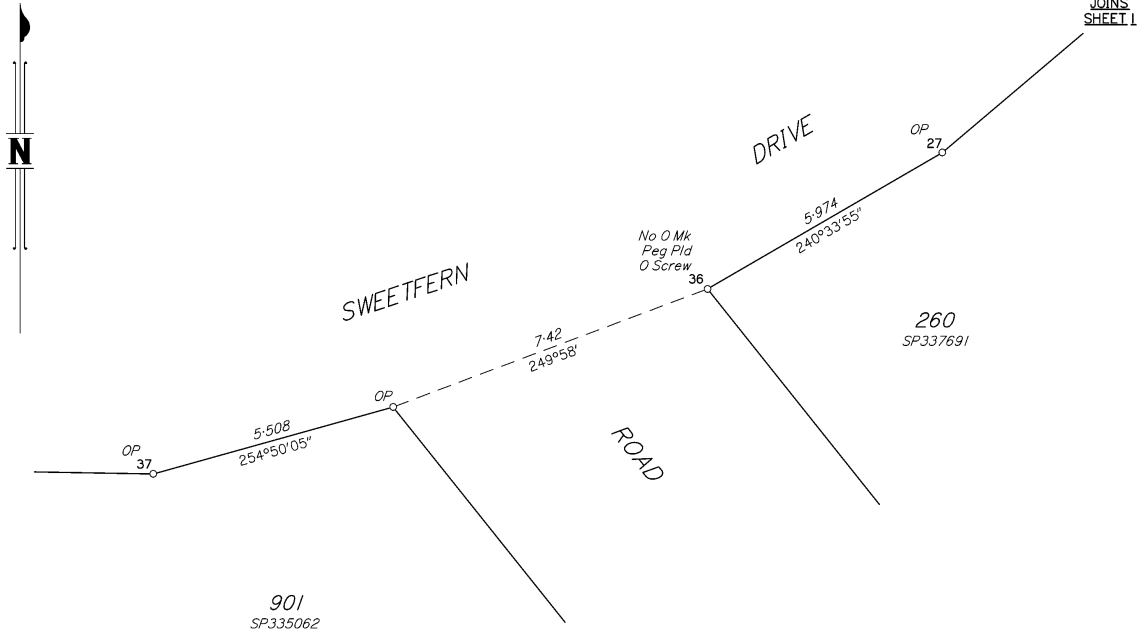
BRSST540-00A-319-6 SP344072

DIAGRAM A  
SCALE 1:150



State copyright reserved  
Insert Plan Number SP344072

BRSST540-00A-319-6 SP344072



PERMANENT MARKS

PM	ORIGIN	BEARING	DIST	NO	TYPE
37-PM		347°16'	4.254	204326	SS Bolt

REFERENCE MARKS

STM	TO	ORIGIN	BEARING	DIST
2	OIP	3/1S9043	98°56'15"	1.334
2	OIP	18/1S278731	176°44'30"	19.991
3	OIP	20/1S278731	98°58'40"	0.961
4	OIP	4/SP337691	203°20'	8.446
5	O Screw in Chnl	8/SP337691	307°55'	4.183
7	Screw in Kb		276°13'	5.317
11	Screw in Kb		157°31'	3.999
12	Screw in G/T		192°32'	6.108
15	Screw in Kb		72°44'	1.335
16	Screw in Kb		133°59'	3.824
18	Screw in G/T		8°23'	8.427
19	Screw in Kb		326°47'	1.293
20	Screw in Kb		264°31'	5.008
29	O Screw in Kb	10/SP337691	165°02'	1.305
29	OIP	10/SP337691	94°08'	3.84
30	Screw in Kb		320°16'	3.846
31	OIP	13/SP337691	274°17'	1.33
31	O Screw in G/T	13/SP337691	69°12'	7.624
32	O Screw in Kb	14/SP337691	214°07'	1.357
34	O Screw in Chnl	16/SP337691	140°13'	5.397
35	Screw in Kb		189°19'	3.848
36	O Screw in Kb	6/SP337691	354°14'	4.133

SCALE 1:100



State copyright reserved

Insert Plan Number **SP344072**